

APPLICATIONS

- For direct installation into the process
- Machine building
- Pipelines and vessels
- Any application where temperature needs to be measured inside a pipe or tank and in which a stem-type thermometer is suitable.

SPECIFICATIONS

Type GA

Gas-filled thermometer with solid stem

Available stem lengths

Any reasonable length with a minimum of 40 mm.¹⁾

Available diameters

63, 80, 100 & 160 mm

Process connection

1/2" BSP sliding standard, other connections available.

Temperature ranges

From -200 up to +800 ° C, with a minimum span of 60 ° C.

⁽¹⁾See drawings for more info on lengths.

DESCRIPTION

GA type thermometers are well suited for any general application where temperature can be measured through installing the stem into the process. With the option of back, bottom and every-angle connections, there is always a way to connect the thermometer while ensuring readability.

TUVO thermometers can also be tested in house to ensure and check the accuracy of the instrument. This is done in house at our production facility in Rotterdam to ensure quality and quick handling.

If there is a chemically aggressive medium or abrasion present in the process, the TUVO TW-type thermowells should be used to protect the instrument. Another main advantage of using a thermowell is that in case of a failing sensor or thermometer, the instrument can be removed without interrupting the process. This decreases downtime and increases overall efficiency in the process.



GAS ACTUATED
THERMOMETERS

OPTIONS

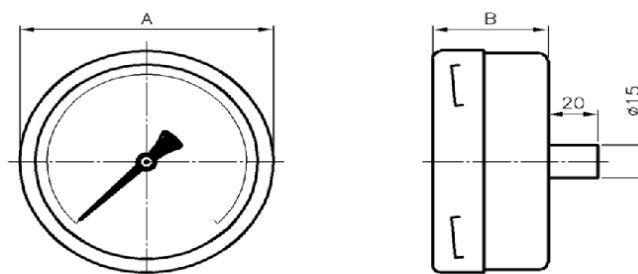
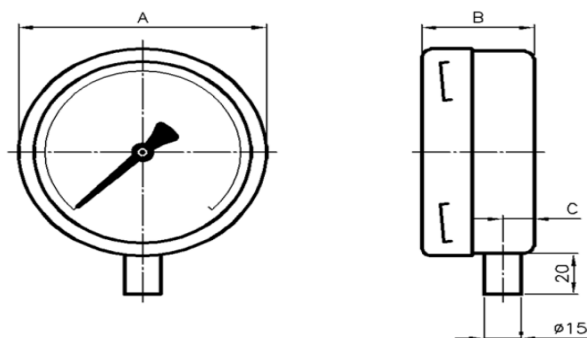
- Test certificate, traceable to national and international standards.
- Glycerine filling
- With back, bottom or every-angle connection
- With TUVO TW-type thermowell.

DIAMETER COMBINATIONS						
Outside diameter (D)	6 mm	8 mm	10 mm	12 mm	15 mm	16 mm
Inside diameter	4 mm	6 mm	7 mm	8 mm	11 mm	13 mm
Wall thickness	1 mm	1 mm	1.5 mm	2 mm	1.5 mm	1.5 mm

VERSIONS

Model GAO : Bottom connection

Model GAA: Back connection



ORDER SHEET

Item	Code	Notes	XXX-	XXX-	XXX	X
Version						
Bottom connection	GAO					
Back connection	GAA					
Every-angle connection	GAE					
Dial diameter						
63 mm	063					
80 mm	080					
100 mm	100					
160 mm	160					
Insert length - L						
Specify length in mm (3 digits)	xxx	(Minimum 040 mm)				
Process connection		For Outside diameters;				
G 1/2"	X					
1/2" NPT	A	all diameters				
M20 x 1,5	B	6, 8, 12 mm				
M27 x 2	C	12 mm only				
G3/4"	D	12 mm only				
Other connection	E	12 and 15 mm				
	Z	(Please specify!)				